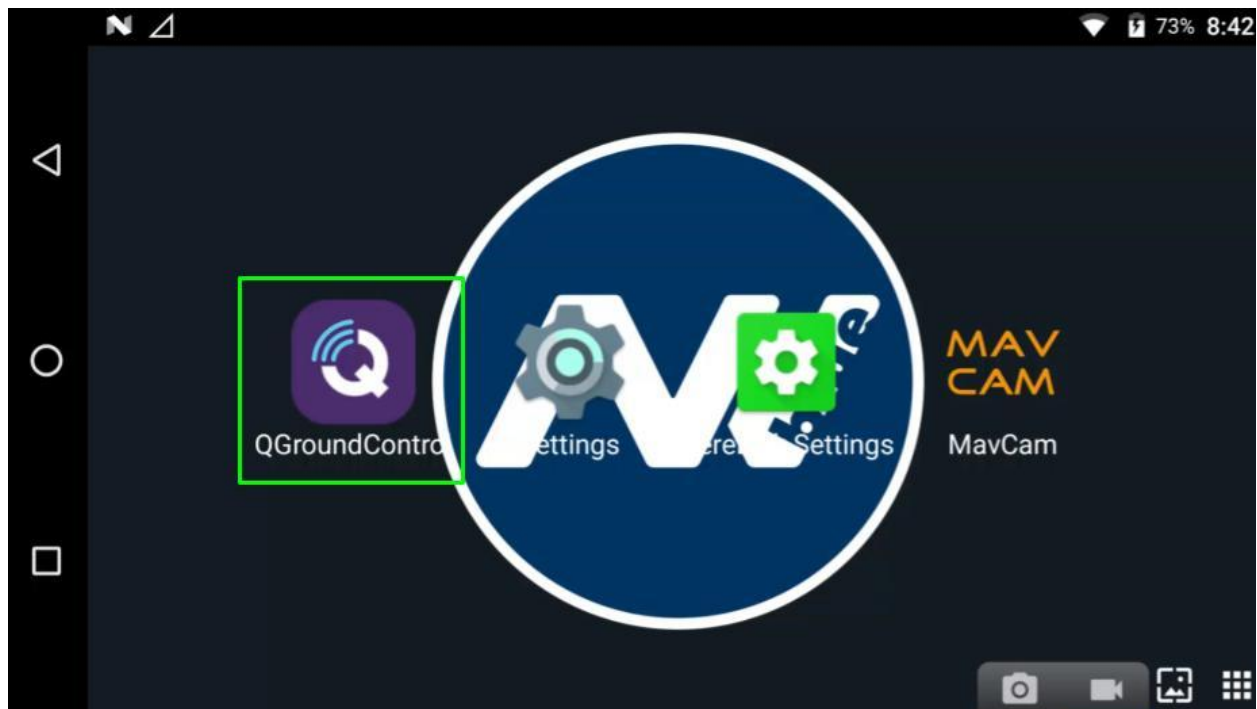


The following instructions are a basic guide to the QGroundControl software, showing how to navigate the application tabs and the different menus.

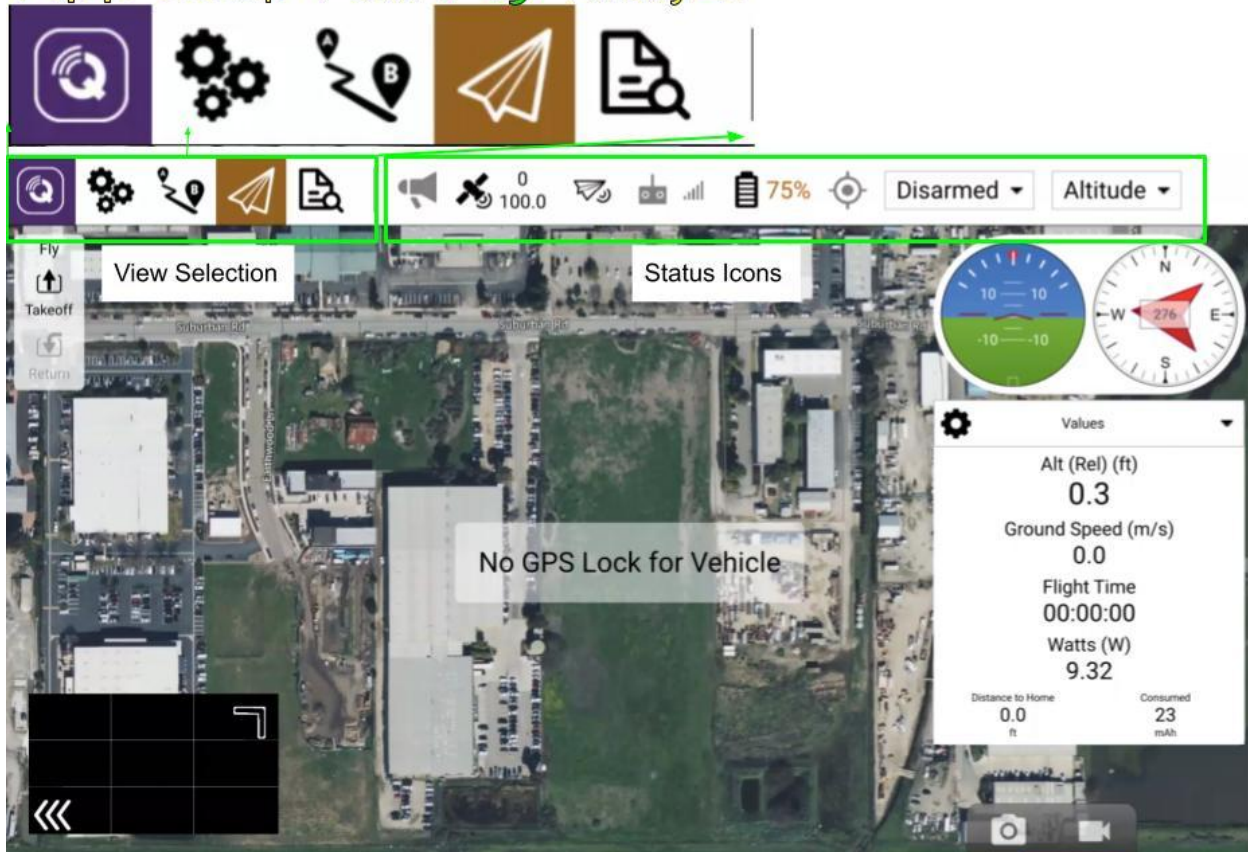
QGroundControl Basic Guide



1. Getting Started

- QGroundControl is the application used to interface the IFT Vehicles to the Herelink Controller with map and flight data. It can be connected to the vehicle via USB, WiFi and through a telemetry radio such as RFD-900 for LRT configurations. QGC is available as an application on the Herelink controller as well as on PC/Mac OS.
- With the Vehicle connected, QGC will show something similar to the following screenshot. The top bar shows your View Selection to the left and Status Icons to the right. **Note:** You can also use QGC without powering on the vehicle to plan a mission via the controller or computer application.

App Setup Plan Fly Analyze

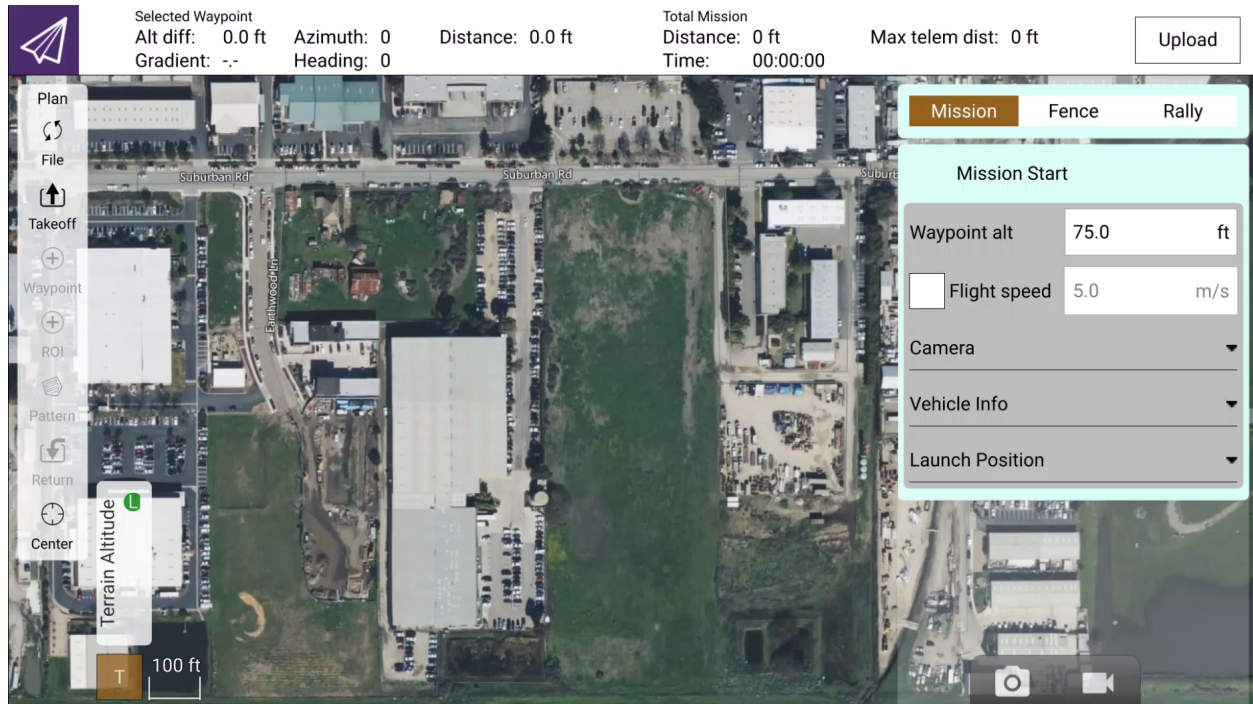


2. View Selection

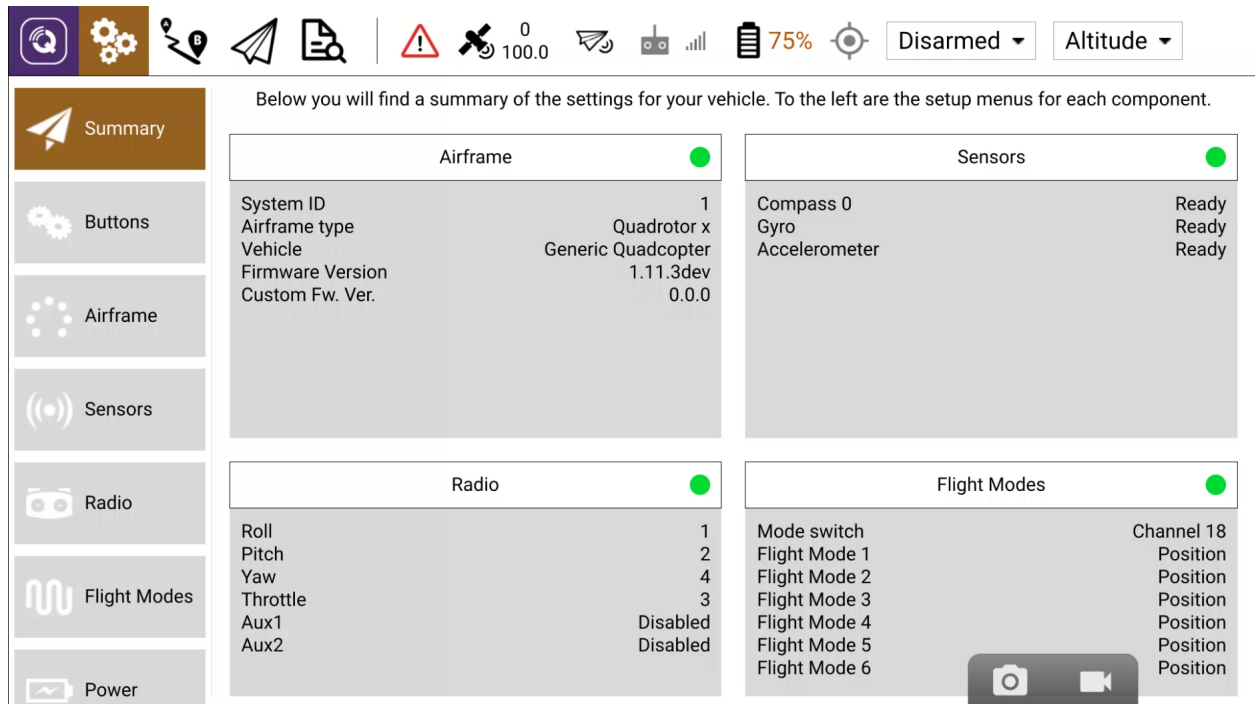
- The Fly tab, selected and highlighted above, is where you will find the Flight view. Showing your map, video stream feed, artificial horizon, compass and values. The values box has a dropdown that can be opened by tapping the upside down triangle to cycle through the different options. While operating IFT Vehicles, depending on your payload configuration, you may need to navigate to the Camera or Video Stream options.



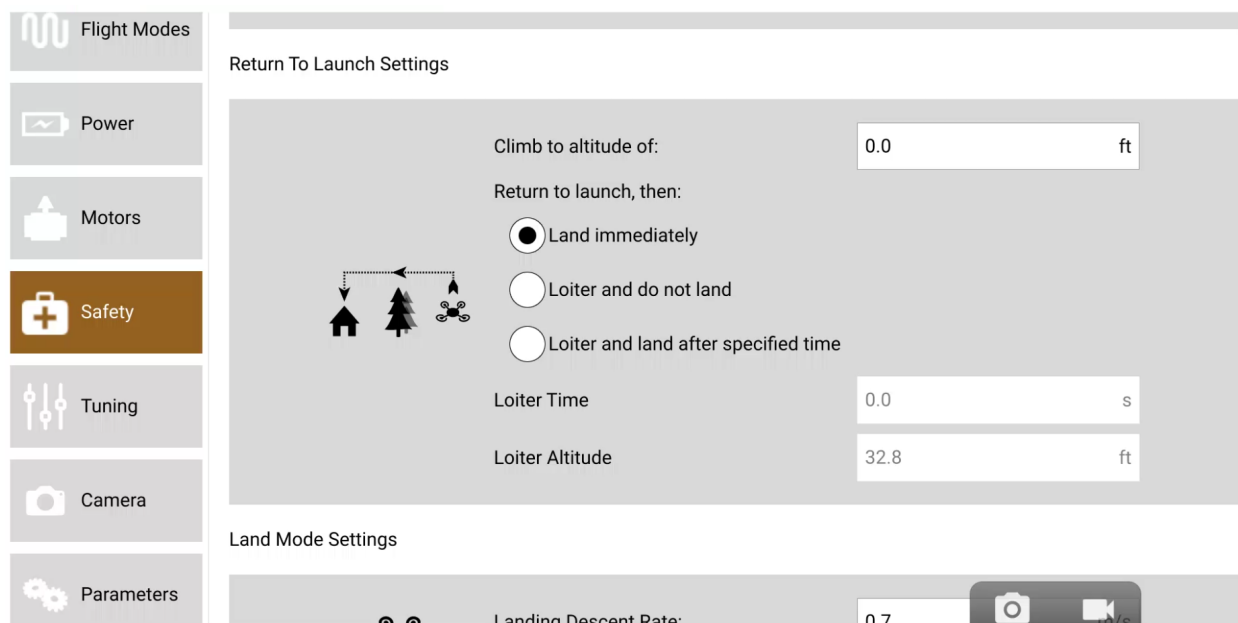
- The Plan Tab, shown below, is where you will plan any autonomous missions for the vehicle to run. See our Mission Quick Start Guide for an in depth guide on the planning features.



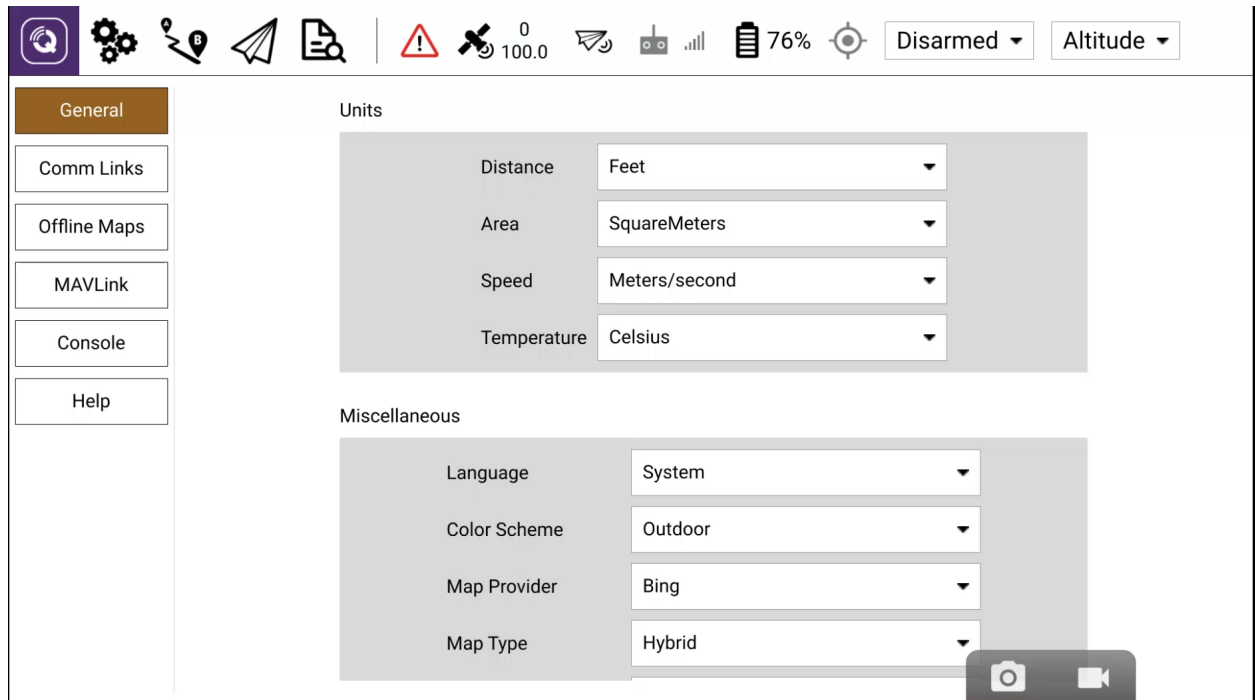
- The Setup Tab, shown below, is a brief summary of the settings for your vehicle. Each component's menu is accessible via the buttons on the left.



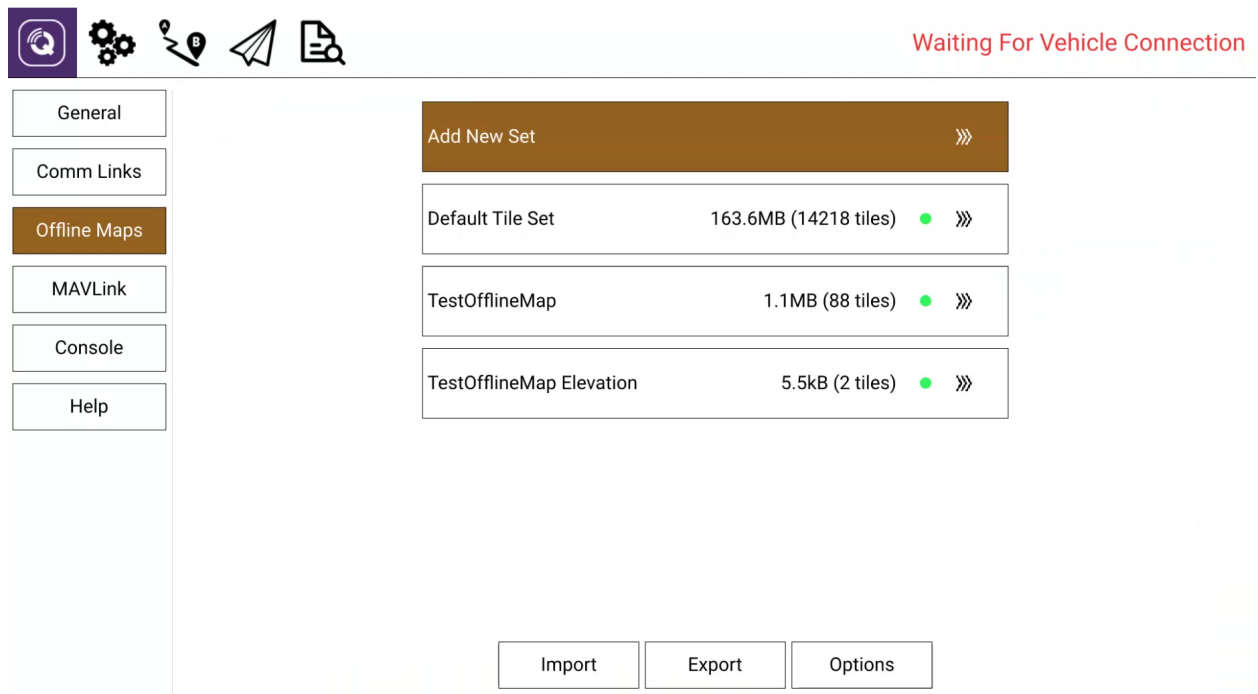
- Under the Safety component menu, you can access the vehicle failsafes such as setting altitude for return to home or low battery percentage warnings and actions.

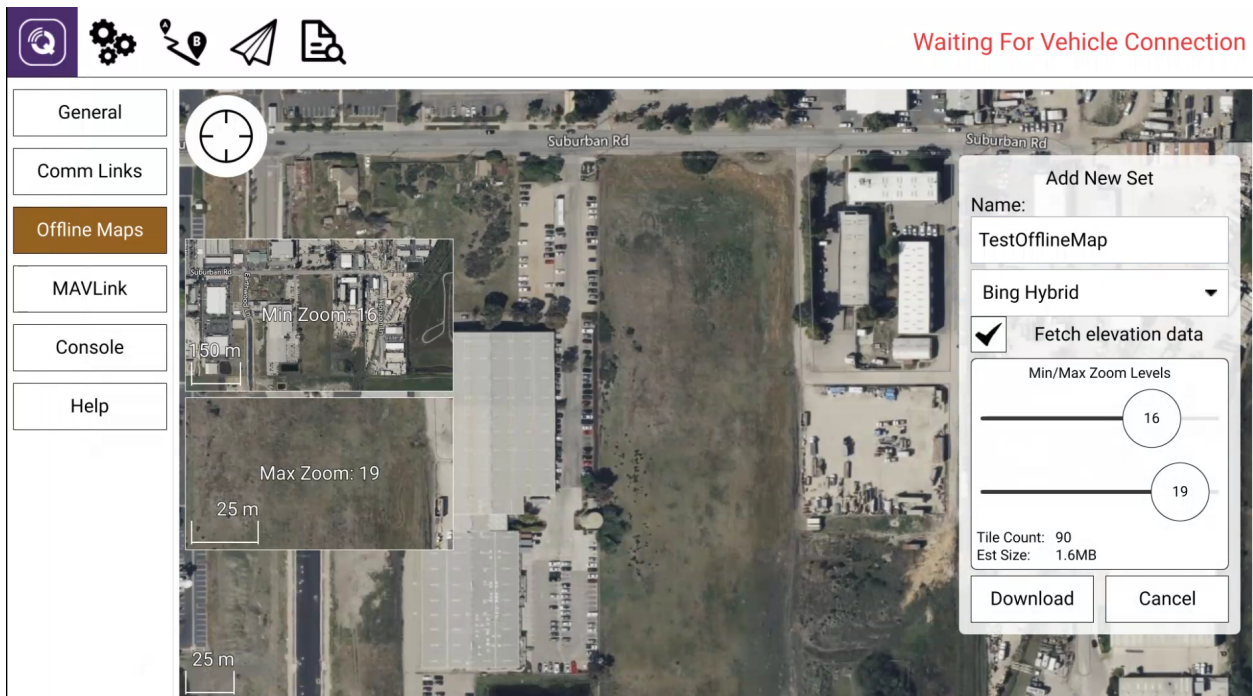


- The App Tab, shown below, is used to access general settings such as selecting imperial or metric measurements and downloading offline maps or switching map providers like Google or Bing.



- To download Offline Maps, select the Offline Maps Tab when connected to an internet connection to select and download map sets. Select Add New Set to detail your desired map settings. There will be a box labeled Fetch elevation data, make sure this is checked and download the map tile. It will show a green icon when the tile is fully downloaded and ready for use.





- See our Mission Quick Start Guide for specifics on activating Terrain Following.
- The Analyze Tab, shown below, is where you will find Flight Logs. Click Refresh to populate the list, select and download your flight logs. **Note:** You must have a micro SD card installed in the Herelink controller in order to download flight logs.

ID	DATE	SIZE	STATUS
118	Thursday, January 19, 2023 1:19:24 PM PST	2.8MB	Available
119	Thursday, January 19, 2023 1:23:16 PM PST	3.4MB	Available
120	Thursday, January 19, 2023 1:35:52 PM PST	1.9MB	Available
121	Thursday, January 19, 2023 1:41:14 PM PST	7.1MB	Available
122	Thursday, January 19, 2023 1:51:04 PM PST	2.4MB	Available
123	Friday, January 20, 2023 11:37:42 AM PST	36.2MB	Available

3. Status Icons



- Status Icons show your vehicle status, from left to right the icons are as follows
 - Errors or notifications via the red triangle !
 - GPS Satellites and HDOP status.
 - Telemetry status.
 - Battery percentage.
 - Flight Power status shows the state of the motors, Armed and Disarmed terms are used to indicate whether or not the motors are rotating.
 - Flight Mode status shows the current flight mode.