

Physical Set-Up Guide

IF1200 Hexacopter





TABLE OF CONTENTS

1. Unboxing	2
2. Attach Legs	3
3. Unfold Arms	5
4. Install GPS	6
5. Install Battery	7
6. Attach Gimbal	8
7. Power On Vehicle	9
8. Attach Propellers	10

1

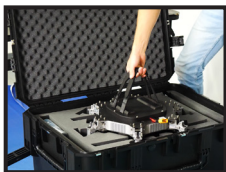
UNBOXING



- STEP 1:** Unlock the drone case by unhooking the (7) hatches by pulling upward.
- STEP 2:** Lift the top of the case open until it rests upright.
- STEP 3:** Remove the IF1200 from the case using the two straps located on top of the drone.
- STEP 4:** Rest IF1200 on a flat surface (min. 2ft x 2ft)
- STEP 5:** Remove other the materials inside the case and place them on a separate table



STEP 1



STEP 3



STEP 4

2

ATTACH LEGS



- STEP 1:** Remove the landing gear located in the wide slots within the drone case.
- STEP 2:** Locate the two sections of landing gear. The shorter piece (with rubber caps) are the “feet” of the drone, while the longer tubes are the “legs.”
- STEP 3:** Loosen the clamp on the shorter piece (feet).
- STEP 4:** Insert the longer tube (legs) perpendicularly into the shorter tube (feet).
- STEP 5:** Tighten the clamp by twisting the lever until fully tightened.

(Repeat steps 1-5 again for the other landing gear)

- STEP 6:** Unfold the two arms that are located next to the leg insert slots on the drone.
- STEP 7:** Insert the leg into the drone body, ensure the notch at the end of the tube aligns with the key inside the corresponding socket.
- STEP 8:** Fully secure the leg by twisting the lever until it is fully tightened.
- STEP 9:** Ensure the o-rings are on the lower half of the tube assembly, closer to the feet.
- STEP 10:** The tightening lever can be repositioned to a convenient position by pulling it outward and rotating it.

2

ATTACH LEGS



STEP 4



STEP 5



STEP 6



STEP 7



STEP 8

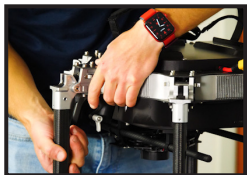
3

UNFOLD ARMS



STEP 1: Unfold the six aircraft arms into upright position by lifting them until it clicks.

STEP 2: The shoulders should lock the arms securely into place (metal clips flip up).



STEP 1



STEP 2

4

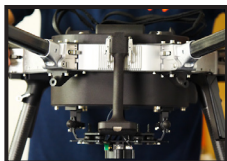
INSTALL GPS



STEP 1: Lift the GPS up, and locate the two clips on each side of the GPS base.

STEP 2: Secure the clips onto the main frame & pull upward, locking the GPS in place.

STEP 3: Make sure clips are securely in place, and not loose.



STEP 1



STEP 2



STEP 3

5

INSTALL BATTERY



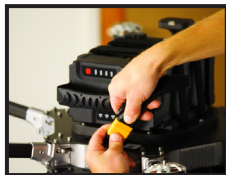
- STEP 1:** Ensure the velcro straps on top of the vehicle are unfastened & moved out of the way so that the battery can be placed on top of the vehicle.
- STEP 2:** Grab your fully charged smart battery and place it securely in the alignment trays.
- STEP 3:** Ensure the battery is centered, and the label is facing up. The battery lead should be on the opposite side of the GPS.
- STEP 4:** Connect the velcro straps tightly over the battery to secure it into place.
- STEP 5:** Connect the battery lead to the corresponding lead on the vehicle, making sure it is seated fully.



STEP 2



STEP 4



STEP 5

6

ATTACH GIMBAL



- STEP 1:** Ensure marks on the top & bottom parts of the gimbal are aligned.
- STEP 2:** The mark on the ring should be aligned with the unlocked icon shown in the first image (below).
- STEP 3:** Attach the bottom part to the top part (keep arrows aligned).
- STEP 4:** Rotate the ring clockwise until the mark on the ring aligns with the lock icon.



STEP 2



STEP 3



STEP 4

7

POWER ON UAV



STEP 1: Press the power button on near the rear of the vehicle.

STEP 2: The LED indicator light will turn on when the aircraft is on, and beeping will occur during the initialization sequence.

STEP 3: The LED on the GPS mast will turn blue as it searches for a signal.



STEP 1



STEP 2

8

ATTACH PROPS



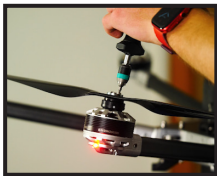
- STEP 1:** Locate the correct propeller for each motor.
- STEP 2:** Three of the IF1200's motors spin clockwise, and have black connecting points. The other three motors spin counterclockwise and have silver connecting points.
- STEP 3:** Attach the prop to the corresponding color of the connector on the motor (Silver to silver, black to black).
- STEP 4:** Ensure the white dots line up with the corresponding motor, place each propeller on its motor.
- STEP 5:** Make sure each propeller is fully seated, with the bottom of the aluminum quick-disconnect parallel to the motor face.
- STEP 6:** Tighten the propellers on the motors to .9Nm using the provided torque screwdriver.
- STEP 7:** Twist screwdriver until you hear a loud click, ensuring the propeller is securely mounted.



STEP 4



STEP 5



STEP 6

